

# COMPATIBILITY GUIDE

## SPECIALIZED OSBB / CRANK COMPATIBILITY - MOUNTAIN FRAMES



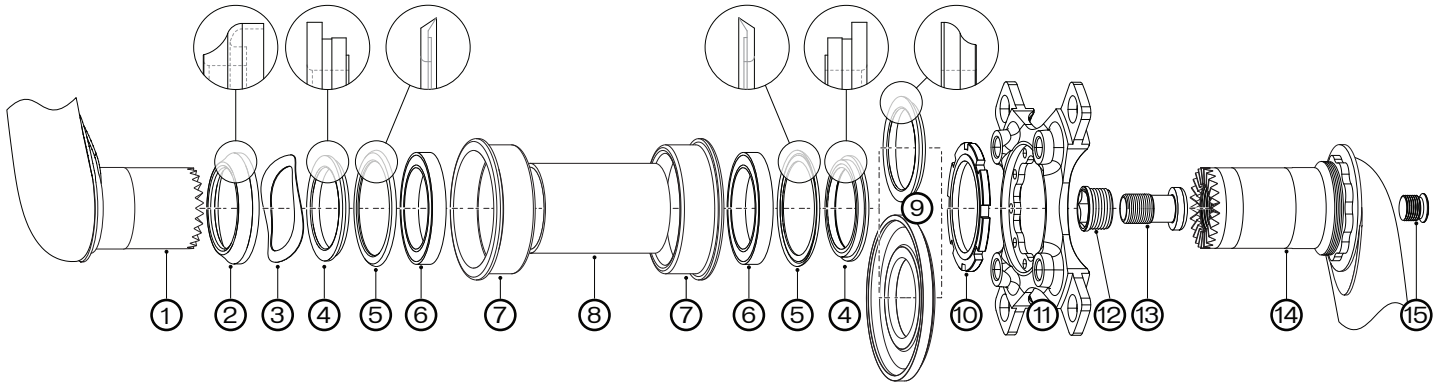
Specialized carbon mountain frames have been offered with several different available bottom bracket configurations. The following chart is designed to outline compatibility.

CRANKSET	BOTTOM BRACKET TYPE		Carbon PF30 Shell <sup>1</sup>	Alloy OSBB Shell <sup>3</sup>	THREADED BB
			Alloy PF30 Shell <sup>2</sup> <ul style="list-style-type: none"> <li>Shell inner diameter: 46mm</li> <li>Shell width: 73mm</li> <li>Bearing width: 73mm with Specialized MTN press-in cups</li> </ul>	<ul style="list-style-type: none"> <li>Shell inner diameter: 42mm</li> <li>Shell width: 84.5mm</li> <li>Bearing width: 81.5mm</li> <li>Requires circlips</li> </ul>	<ul style="list-style-type: none"> <li>Shell width: 73mm</li> <li>BSA standard thread</li> </ul>
SPECIALIZED CARBON			<ul style="list-style-type: none"> <li>Specialized MTN press-in cups</li> </ul>	<ul style="list-style-type: none"> <li>Circlips</li> </ul>	Not compatible
SHIMANO HOLLOWTECH II	<ul style="list-style-type: none"> <li>Direct fit with Specialized press-in threaded cups (included with frame)</li> </ul>			<ul style="list-style-type: none"> <li>Shimano SM-BB91-42 adapter</li> </ul>	<ul style="list-style-type: none"> <li>Direct fit</li> </ul>
	OR		<ul style="list-style-type: none"> <li>SRAM PF30 press-in threaded cups (#00.6415.049.010)</li> </ul>		
SRAM/TRUVATIV BB30			<ul style="list-style-type: none"> <li>SRAM PF30 cups for BB30</li> </ul>	Not compatible	Not compatible
SRAM/TRUVATIV GXP			<ul style="list-style-type: none"> <li>SRAM PF30 press-in threaded cups (#00.6415.049.010)</li> </ul>	<ul style="list-style-type: none"> <li>SRAM BB GXP press-in threaded cups (#00.6415.033.040)</li> </ul>	<ul style="list-style-type: none"> <li>Direct fit</li> </ul>
RACE FACE BB30			Not compatible	Not compatible	Not compatible
RACE FACE			Not compatible	Not compatible	<ul style="list-style-type: none"> <li>Direct fit</li> </ul>
FSA BB30			Not compatible	Not compatible	Not compatible
FSA MEGAEXO			Not compatible	Not compatible	<ul style="list-style-type: none"> <li>Direct fit</li> </ul>

### FRAME / BOTTOM BRACKET SPECIFICATION

YEAR	FAMILY	MODEL	BOTTOM BRACKET
2011	Epic	All carbon models	<sup>1</sup> 46x73mm carbon PF30 shell
2011	Stumpjumper HT	All carbon models	<sup>1</sup> 46x73mm carbon PF30 shell
2011	SJ FSR	EVO (alloy)	<sup>2</sup> 46x73mm alloy PF30 shell
2011	Demo 8	All alloy models	<sup>2</sup> 46x83mm alloy PF30-DH shell
2010 - 2011	Stumpjumper FSR	All carbon models	<sup>3</sup> 42x84.5 alloy OSBB shell
2009 - 2011	Era	All carbon models	<sup>3</sup> 42x84.5 alloy OSBB shell
2009 - 2010	Epic	All carbon models	<sup>3</sup> 42x84.5 alloy OSBB shell
2009 - 2010	Stumpjumper HT	All carbon models	<sup>3</sup> 42x84.5 alloy OSBB shell

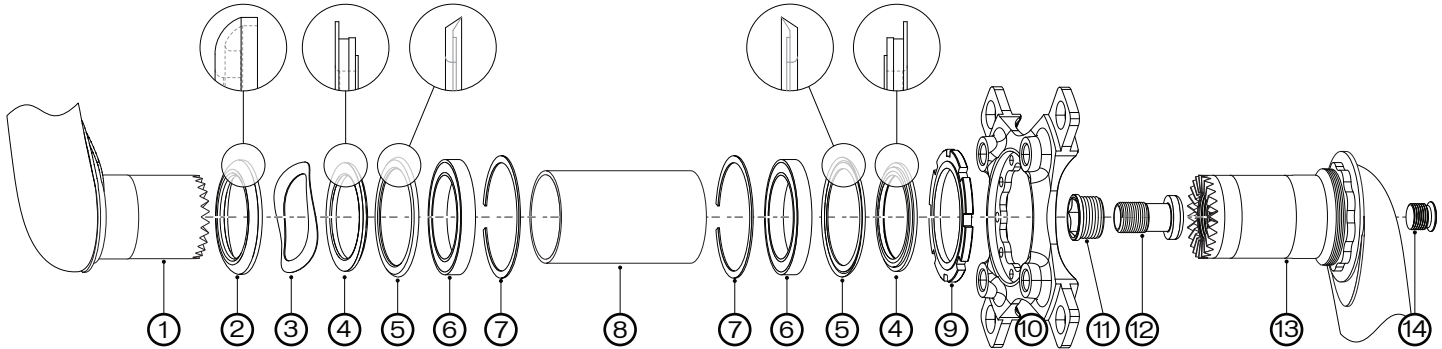
**PARTS FOR SPECIALIZED CARBON CRANKS AND SPECIALIZED 73MM PF30 BOTTOM BRACKET SHELLS**



DESCRIPTION	OD	ID	WIDTH	DESCRIPTION	OD	ID	WIDTH	TOOL
1. Non-drive-side crank arm				9. Drive-side spacer (triple spider)	39	30.2	3.2	
2. Non-drive-side alloy bearing cover	41	30.2	7.7	9. Drive-side spacer (double spider)	62	30.2	6	
3. Wave washer	38.7	30.4	0.6	10. Spider locking	47	34	3.5	
4. Alloy bearing seal spacer	39	30.2	3.9	11. Spider				
5. Bearing seal	44	36	1	12. Internal steel retainer nut	17.3	12.2	9.3	12mm
6. 6808 series cartridge bearings	42	30	7	13. Internal M12 steel center bolt	12	7	23	T45
7. 46mm OSBB press-in cups <sup>1</sup>	46	42	11.3	14. Drive-side crank arm				
8. Carbon / alloy center sleeve	35.3	30	59	15. Drive-side crank arm cover screw	9.8		9	6mm

<sup>1</sup> 46mm OSBB press-in cups (7) are for use with Specialized frames using 73mm x 46mm carbon or alloy bottom bracket shells with no circlip grooves.

**PARTS FOR SPECIALIZED CARBON CRANKS AND SPECIALIZED 84.5MM OSBB BOTTOM BRACKET SHELLS**



DESCRIPTION	OD	ID	WIDTH	DESCRIPTION	OD	ID	WIDTH	TOOL
1. Non-drive-side crank arm				8. Carbon / alloy center sleeve	35.3	30	67.5	
2. Non-drive-side alloy bearing cover	41	30.2	3.75	9. Spider locking	47	34	3.5	
3. Wave washer	38.7	30.4	0.6	10. Spider				
4. Alloy bearing seal spacer	39	30.2	2.3	11. Internal steel retainer nut	17.3	12.2	9.3	12mm
5. Bearing seal	44	36	1	12. Internal M12 steel center bolt	12	4.5	23	T45
6. 6808 series cartridge bearings	42	30	7	13. Drive-side crank arm				
7. 42mm OSBB circlips <sup>2</sup>	44	38	1	14. Drive-side crank arm cover screw	9.8		9	6mm

<sup>2</sup> 42mm OSBB circlips (7) are for use with Specialized frames using 84.5 x 42mm alloy bottom bracket shells with circlip grooves.

**SPECIALIZED BICYCLE COMPONENTS**

15130 Concord Circle, Morgan Hill, CA 95037 (408) 779-6229  
CG0308 Rev.C, February 2011

Please note all instructions are subject to change for improvement without notice.  
Please visit [www.specialized.com](http://www.specialized.com) for periodic tech updates.  
Feedback: [techdocs@specialized.com](mailto:techdocs@specialized.com)